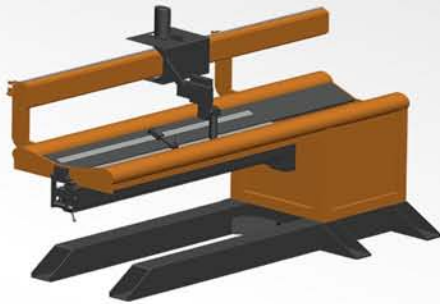


ALL TIME

Longitudinal Seam Welder



ALL TIME offers high quality Longitudinal Seam Welder. It is designed for straight line and linear welding applications. It is applied in welding tubes, cylinders, flat sheets, sinks, tank shells and others. Applicable in welding material such as aluminum, stainless steel, hastellpy, titanium, inconel, and other materials.

Features:

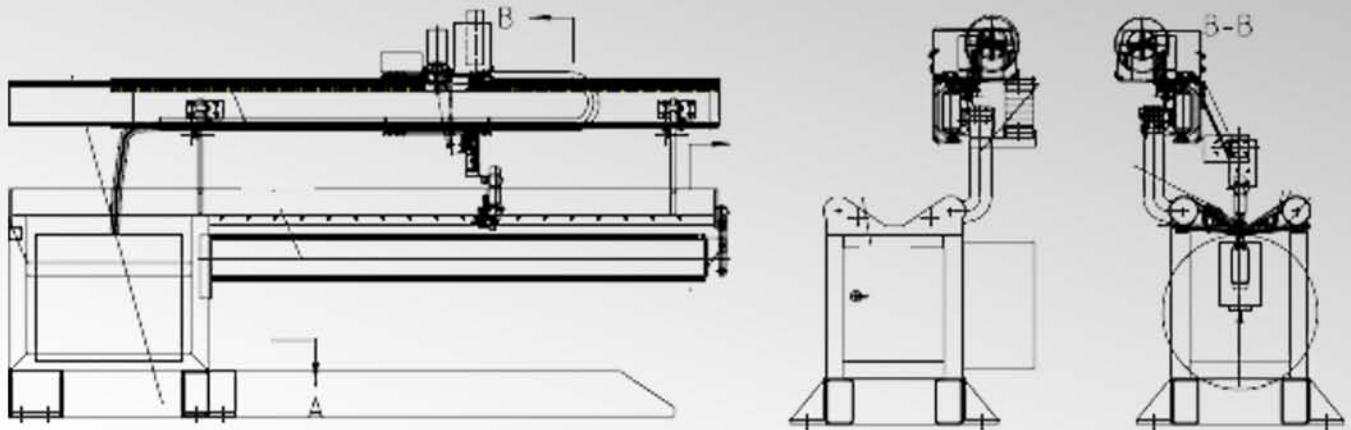
- 1) The dual edged copper strip is designed to reduce air aspiration between fingers & provide a “chill stunt” effect which aborb and dissipate heat by applying an additional mass under pressure to the workpieces.
- 2) The large mounting surface of the side beam allows the carriage to carry different welding apparatus for various welding processes.
- 3) The Retractable edge aligning device is designed to assist the operator in aligning the piecepart accurately over the centerline of the insert groove.
- 4) The saftey swtich is used to prevent the back up tooling from damages.
- 5) Back up mandrel are interchangeable with others that as the same length and pieceparts in any shape that can be slipped over the cantilevered free end. This allows LSW to weld various shapes: cones, flat sheets, cylinders, open ended box.
- 6) The copper made back up bar inserts are designed to dissbate heat and it is grooved to control the size and shape of the welding drop-through.

TEL: +852-2407-6414

EMAIL: info@allfitwelding.com



Standard components:



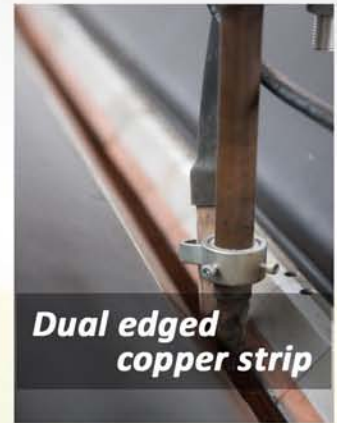
Components:



All Time Controller



Aligning device



Dual edged copper strip

Technical Parameters:

Model: AT-LSX(P,S,H)	800	1200	1500	2000	2500	4000	6000
Max weld length (mm)	800	1200	1500	2000	2500	4000	6000
Min weld diameter (mm)	90	108	133	175	184	387	616
Workpieces Thickness	AT-LSP	0.1-10mm					
	AT-LSS	0.3-10mm					
	AT-LSH	0.5-20mm					
Welding speed (mm/min)	75 - 3450						

Visit us at: www.alltimewelding.com

